

MULTISPLITS DC INVERTER

R 410 A

APPLICATIONS

RESIDENTIAL AND SERVICE SECTOR (OFFICES, SHOPS)



WALL-MOUNTED



CONSOLE



FLOOR/CEILING MOUNTED



CASSETTE

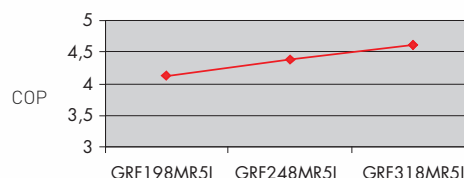


DUCTABLE



Performance, comfort and saving

- 3 models Air to Air heat pumps
A class
- Exceptional performance coefficient
in cooling and heating mode
- Several possible combinations :
3 outdoor units and 15 indoor units
- Very great length of piping up to 70 meters
with a high difference up to 15 meters.
- An exceptional large range of operation.)



Direct expansion

DC Inverter

**System with Air to Air heat pumps
Multisplits DC Inverter**

46

Dual-split

Tri-split

Quadri-split

MULTISPLITS DC INVERTER

R 410 A



GRF 318 MR 5I



GRF 198/248 MR 5I

- > Air/Air heat pumps
- > COP from 4.21 to 4.61
- > A class

- Système Multisplit and heat pump Multisplit systems, the ideal solution to provide comfortable conditions to 2, 3 or 4 rooms from one only outdoor unit
- 4 system capacities: from 5.6 to 9.40 kW
- DC Inverter technology - R410A
- A class - all new Multisplits are rated in the best Energy Efficiency Class thanks to:
 - last generation Twin rotary compressor: perfectly balanced dual rotors revolve smoothly and efficiently to provide powerful and vibration-free performance
 - power consumption during operation is reduced to minimum and consequently also full life cycle costs
- Fast and precise temperature control thanks to the Advanced Digital Hybrid (ADH) technology: the DC compressor operates at maximum power to provide almost instant heating or cooling and when desired temperature is reached a special Pulse Width Module automatically adjusts the compressor frequency so that to meet the room cooling or heating requirements.

- Maximum flexibility for installation: up to 70 m of pipe length
- Heating no-stop system: avoid heating stop due to defrosting cycles
- Fully mixed matching possibility of the indoor units (high-wall, cassette, ducted, floor and floor/ceiling)
- Each indoor unit is managed by its own full function remote control, with temperature sensor inside, 1h and 24h timers, operation mode selection, fan speed control, temperature setting
- In case more indoor units are installed in the same room, it is possible to address each remote control to its own indoor unit only, so that to avoid any interference
- It works with at least two indoor units connected
- Electronic protection against over-pressures

ACCESSORIES

Type		Models	Code
Plenum with circular spigots (discharge) Ø 200 m	2 spigots	DSAF 98 - 128	387027973
	3 spigots	DSAF 187 - 247	387027974
Wall support for indoor unit		GRF 198 - 248 - 318 MR5I	K 60 U 035 T
Filter with active charcoal		KPAF	397021907



OUTDOOR UNITS - AIR/AIR HEAT PUMPS

Outdoor unit	GRF 198 MR5I		GRF 248 MR5I		GRF 318 MR5I		
	Cooling	Heating	Cooling	Heating	Cooling	Heating	
Number of indoor units	2		2 to 3		2 to 4		
Capacity (mini-maxi)	5.6 (2.1-6.8)	7.3 (2.4-8.4)	6.8 (2.9-8.1)	8.6 (3.4-9.0)	8.0 (2.9-9.2)	9.4 (3.4-9.8)	
Energy class	ABCDEFGF	A	A	A	A	A	
EER / COP	kW	3.30	4.21	3.40	4.30	4.64	4.61
Air flow (m³/h)	LS/MS/HS	1 310 / 1 780 / 2 900	1 310 / 1 780 / 2 900	1 310 / 1 780 / 2 900	1 400 / 1 850 / 3 070	1 400 / 1 850 / 3 070	
Fan speeds		auto	auto	auto	auto	auto	
Power supply	V/Ph/Hz	230/1/50	230/1/50	230/1/50	230/1/50	230/1/50	
Running current (A)		7.52	7.7	8.87	8.87	7.58	8.96
Input power (kW)		1.695	1.735	2.0	2.0	1.725	2.040
Annual energy consumption in cooling mode (500h) (kWh)		847.5	-	1 000	-	862.5	-
Refrigerant type		R 410 A	R 410 A	R 410 A	R 410 A	R 410 A	
Compressor type		Twin Rotary (DC inverter)	Twin Rotary (DC inverter)	Twin Rotary (DC inverter)	Twin Rotary (DC inverter)	Twin Rotary (DC inverter)	
Liquid pipe diameter	(inches)	1/4 x 2	1/4 x 3	1/4 x 3	1/4 x 4	1/4 x 4	
Gas pipe diameter	(inches)	3/8 x 2	3/8 x 3	3/8 x 3	3/8 x 3 - 1/2 x 1	3/8 x 3 - 1/2 x 1	
Max. distance between units/unit	m	25	25	25	30	30	
Max. total tubing length		45	60	60	70	70	
Number of connectable with standard charge		45	45	45	45	45	
Refrigerant additional charge (until 60m)	gr/m	-	20	20	20	20	
Max. height difference between units	m	15	15	15	15	15	
Sound power level (dB(A))	HS	62	64	64	66	62	64
Sound pressure level (dB(A))	HS	50	52	50	52	53	54
Net weight	kg	65	65	65	82	82	
Height x width x depth	mm	740 x 900 x 320	740 x 900 x 320	740 x 900 x 320	890 x 900 x 320	890 x 900 x 320	

The pressure levels here indicated are in compliance with the European standard EN 12102

OPERATING LIMITS

COOLING maximum	T indoor air	32°C (DB) / 23°C (WB)	HEATING maximum	T indoor air	27° C (DB)
	T outdoor air	43°C (DB)		T outdoor air	24°C (DB) / 18°C (WB)
minimum	T indoor air	19°C (DB) / 14°C (WB)	minimum	T indoor air	16° C (DB)
	T outdoor air	19°C (DB)		T outdoor air	-15°C (WB)

Certified data

Model and combination	GRF 198 MR5I + 2 x UI 98	GRF 248 MR5I + 2 x UI 98	GRF 318 MR5I + 2 x UI 98
Temperature conditions : T indoor air 20°C and T outdoor air intake 7/6°C (DB/WB)			
Heating capacity (W)	6 450	7 200	7 200
Input power (W)	1 639	1 791	1 672
COP	3.93	4.02	4.3
Model and combination	GRF 198 MR5I + 2 x UI 128	GRF 198 MR5I + 2 x UI 128	GRF 318 MR5I + 2 x UI 128
Temperature conditions : T indoor air 20°C and T outdoor air intake 7/6°C (DB/WB)			
Heating capacity (W)	6 900	8 000	8 000
Input power (W)	1 754	1 980	1 821
COP	3.93	4.02	4.39
Model and combination		GRF 248 MR5I + 2 x UI 187/188	GRF 318 MR5I + 2 x UI 187/188
Temperature conditions : T indoor air 20°C and T outdoor air intake 7/6°C (DB/WB)			
Heating capacity (W)		8 600	9 000
Input power (W)		2 000	2 090
COP		4.3	4.3
Model and combination			GRF 318 MR5I+1xUI 187/188&1xUI 247/248
Temperature conditions : T indoor air 20°C and T outdoor air intake 7/6°C (DB/WB)			
Heating capacity (W)			9 400
Input power (W)			2 040
COP			4.6
Model and combination	GRF 198 MR5I + 2 x UI 98	GRF 248 MR5I + 2 x UI 98	GRF 318 MR5I + 2 x UI 98
Temperature conditions : T indoor air 20°C and T outdoor air intake -7/-8°C (DB/WB)			
Heating capacity (W)	6 024	6 725	6 725
Input power (W)	3 358	3 670	3 425
COP	1.79	1.83	1.96
Model and combination	GRF 198 MR5I + 2 x UI 128	GRF 248 MR5I + 2 x UI 128	GRF 318 MR5I + 2 x UI 128
Temperature conditions : T indoor air 20°C and T outdoor air intake -7/-8°C (DB/WB)			
Heating capacity (W)	6 445	6 725	6 725
Input power (W)	3 593	3 669	3 425
COP	1.79	1.83	1.96
Model and combination		GRF 248 MR5I + 2 x UI 187/188	GRF 318 MR5I + 2 x UI 187/188
Temperature conditions : T indoor air 20°C and T outdoor air intake -7/-8°C (DB/WB)			
Heating capacity (W)		8 032	8 406
Input power (W)		4 097	4 282
COP		1.96	1.96
Model and combination			GRF 318 MR5I+1xUI 187/188&1xUI 247/248
Temperature conditions : T indoor air 20°C and T outdoor air intake -7/-8°C (DB/WB)			
Heating capacity (W)			8 780
Input power (W)			4 179
COP			2.1
Sound power level (dB(A)) :			
Outdoor unit (sound level)	62	65.6	65.6

PERFORMANCE

Outdoor unit		GRF 198 MR5I						
Performance		Cooling			Heating			
Combinations for 2 rooms		Indoor capacity (kW)			Total capacity (mini-maxi)	Indoor capacity (kW)		Total capacity (mini-maxi)
		Room A	Room B		[kW]	Room A	Room B	[kW]
1 unit operation	98	2.65	-	-	2.65 (1.4 - 3.2)	3.60	-	3.60 (1.8 - 4.7)
	128	3.50	-	-	3.50 (1.5 - 3.6)	4.20	-	4.20 (1.9 - 5.1)
	187/188	5.15	-	-	5.15 (1.6 - 5.8)	6.00	-	6.00 (2.0 - 7.8)
2 units operation	98+98	2.50	2.50	-	5.00 (2.0 - 6.3)	3.20	3.20	6.40 (2.3 - 8.4)
	98+128	2.24	2.96	-	5.20 (2.1 - 6.8)	3.07	3.58	6.65 (2.3 - 8.4)
	98+187/188	1.90	3.70	-	5.60 (2.1 - 6.8)	2.74	4.56	7.30 (2.4 - 8.4)
	128+128	2.70	2.70	-	5.40 (2.0 - 6.8)	3.45	3.45	6.90 (2.3 - 8.4)
	128+187/188	2.27	3.33	-	5.60 (2.1 - 6.8)	3.01	4.29	7.30 (2.4 - 8.4)

Outdoor unit		GRF 248 MR5I								
Performance		Cooling				Heating				
Combinations for 3 rooms		Indoor capacity (kW)				Total capacity (mini-maxi)	Indoor capacity (kW)			Total capacity (mini-maxi)
		Room A	Room B	Room C		[kW]	Room A	Room B	Room C	[kW]
1 unit operation	98	2.65	-	-	-	2.65 (1.4 - 3.2)	3.60	-	-	3.60 (1.8 - 4.7)
	128	3.50	-	-	-	3.50 (1.5 - 3.6)	4.20	-	-	4.20 (1.9 - 5.1)
	187/188	5.15	-	-	-	5.15 (1.6 - 5.8)	6.00	-	-	6.00 (2.0 - 7.8)
	247/248	6.80	-	-	-	6.80 (1.6 - 6.8)	8.00	-	-	8.00 (2.0 - 8.0)
2 units operation	98+98	2.65	2.65	-	-	5.30 (2.0 - 6.3)	3.60	3.60	-	7.20 (2.3 - 8.5)
	98+128	2.54	2.54	-	-	5.08 (2.0 - 6.8)	3.51	4.09	-	7.60 (2.3 - 8.5)
	98+187/188	2.28	4.42	-	-	6.70 (2.1 - 8.1)	3.15	5.25	-	8.40 (2.4 - 9.0)
	98 + 247/248	1.85	4.95	-	-	6.80 (2.1 - 8.1)	2.56	6.04	-	8.60 (2.4 - 9.0)
	128+128	3.30	3.30	-	-	6.60 (2.0 - 8.1)	4.00	4.00	-	8.00 (2.3 - 8.5)
	128+187/188	2.75	4.05	-	-	6.80 (2.1 - 8.1)	3.50	5.00	-	8.50 (2.4 - 9.0)
	128 + 247/248	2.25	4.55	-	-	6.80 (2.1 - 8.1)	2.84	5.76	-	8.60 (2.4 - 9.0)
	187/188 + 187/188	3.40	3.40	-	-	6.80 (2.1 - 8.1)	4.30	4.30	-	8.60 (2.4 - 9.0)
3 units operation	98+98+98	2.27	2.27	2.27	-	6.80 (2.9 - 8.1)	2.87	2.87	2.87	8.60 (3.4 - 9.0)
	98+98+128	2.05	2.05	2.70	-	6.80 (2.9 - 8.1)	2.72	2.72	3.17	8.60 (3.4 - 9.0)
	98+98+187/188	1.72	1.72	3.35	-	6.80 (2.9 - 8.1)	2.35	2.35	3.91	8.60 (3.4 - 9.0)
	98+128+128	1.87	2.47	2.47	-	6.80 (2.9 - 8.1)	2.58	3.01	3.01	8.60 (3.4 - 9.0)
	98+128+187/188	1.59	2.11	3.10	-	6.80 (2.9 - 8.1)	2.24	2.62	3.74	8.60 (3.4 - 9.0)
	128+128+128	2.27	2.27	2.27	-	6.80 (2.9 - 8.1)	2.87	2.87	2.87	8.60 (3.4 - 9.0)
	128 + 128 + 187/188	1.96	1.96	2.88	-	6.80 (2.9 - 8.1)	2.51	2.51	3.58	8.60 (3.4 - 9.0)

Outdoor unit		GRF 318 MR5I									
Performance		Cooling					Heating				
Combinations for 4 rooms		Indoor capacity (kW)				Total capacity (mini-maxi)	Indoor capacity (kW)				Total capacity (mini-maxi)
		A	B	C	D	[kW]	A	B	C	D	[kW]
1 unit operation	98	2.65	-	-	-	2.65 (1.5 - 3.2)	3.60	-	-	-	3.60 (1.8 - 4.7)
	128	3.50	-	-	-	3.50 (1.6 - 3.6)	4.20	-	-	-	4.20 (1.9 - 5.1)
	187/188	5.15	-	-	-	5.15 (1.7 - 5.8)	6.00	-	-	-	6.00 (2.0 - 7.8)
	247/248	7.10	-	-	-	7.10 (1.8 - 7.4)	8.50	-	-	-	8.50 (2.0 - 8.8)
2 units operation	98+98	2.65	2.65	-	-	5.30 (2.0 - 6.5)	3.60	3.60	-	-	7.20 (2.4 - 8.5)
	98+128	2.54	3.36	-	-	5.90 (2.0 - 7.4)	3.51	4.09	-	-	7.60 (2.6 - 8.5)
	98+187/188	2.46	4.79	-	-	7.25 (2.3 - 8.5)	3.24	5.41	-	-	8.65 (3.3 - 9.4)
	98+247/248	2.11	5.64	-	-	7.75 (2.3 - 8.8)	2.68	6.32	-	-	9.00 (3.3 - 9.8)
	128+128	3.40	3.40	-	-	6.80 (2.2 - 8.4)	4.00	4.00	-	-	8.00 (2.9 - 8.5)
	128+187/188	3.03	4.47	-	-	7.50 (2.6 - 8.8)	3.60	5.15	-	-	8.75 (3.4 - 9.8)
	128+247/248	2.63	5.33	-	-	7.95 (2.6 - 8.8)	3.02	6.12	-	-	9.14 (3.4 - 9.8)
	187/188+187/188	3.95	3.95	-	-	7.90 (2.6 - 8.8)	4.50	4.50	-	-	9.00 (3.4 - 9.8)
3 units operation	187/188+247/248	3.36	4.64	-	-	8.00 (2.7 - 8.8)	3.89	5.51	-	-	9.40 (3.4 - 9.8)
	98+98+98	2.43	2.43	2.43	-	7.30 (2.5 - 8.6)	2.95	2.95	2.95	-	8.85 (3.4 - 9.4)
	98+98+128	2.26	2.26	2.98	-	7.50 (2.7 - 9.0)	2.81	2.81	3.28	-	8.90 (3.4 - 9.8)
	98+98+187/188	2.00	2.00	3.89	-	7.90 (2.9 - 9.0)	2.51	2.51	4.18	-	9.20 (3.4 - 9.8)
	98+98+247/248	1.71	1.71	4.58	-	8.00 (2.9 - 9.0)	2.16	2.16	5.09	-	9.40 (3.4 - 9.8)
	98+128+128	2.13	2.81	2.81	-	7.75 (2.7 - 9.0)	2.70	3.15	3.15	-	9.00 (3.4 - 9.8)
	98+128+187/188	1.88	2.48	3.65	-	8.00 (2.9 - 9.0)	2.43	2.83	4.04	-	9.30 (3.4 - 9.8)
	98+128+247/248	1.60	2.11	4.29	-	8.00 (2.9 - 9.0)	2.08	2.42	4.90	-	9.40 (3.4 - 9.8)
	98+187/188+187/188	1.64	3.18	3.18	-	8.00 (2.9 - 9.0)	2.17	3.62	3.62	-	9.40 (3.4 - 9.8)
	128+128+128	2.65	2.65	2.65	-	7.95 (2.9 - 9.0)	3.03	3.03	3.03	-	9.10 (3.4 - 9.8)
	128+128+187/188	2.30	2.30	3.39	-	8.00 (2.9 - 9.0)	2.73	2.73	3.90	-	9.35 (3.4 - 9.8)
	128+128+247/248	1.99	1.99	4.03	-	8.00 (2.9 - 9.0)	2.34	2.34	4.73	-	9.40 (3.4 - 9.8)
128+187/188+247/248	2.03	2.99	2.99	-	8.00 (2.9 - 9.0)	2.44	3.48	3.48	-	9.40 (3.4 - 9.8)	
4 units operation	98+98+98+98	2.00	2.00	2.00	2.00	8.00 (2.9 - 9.2)	2.35	2.35	2.35	2.35	9.40 (3.4 - 9.8)
	98+98+98+128	1.85	1.85	1.85	2.45	8.00 (2.9 - 9.2)	2.26	2.26	2.26	2.63	9.40 (3.4 - 9.8)
	98+98+98+187/188	1.62	1.62	1.62	3.15	8.00 (2.9 - 9.2)	2.01	2.01	2.01	3.36	9.40 (3.4 - 9.8)
	98+98+128+128	1.72	1.72	2.28	2.28	8.00 (2.9 - 9.2)	2.17	2.17	2.53	2.53	9.40 (3.4 - 9.8)
	98+98+128+187/188	1.52	1.52	2.01	2.95	8.00 (2.9 - 9.2)	1.94	1.94	2.27	3.24	9.40 (3.4 - 9.8)
	98+128+128+128	1.61	2.13	2.13	2.13	8.00 (2.9 - 9.2)	2.09	2.44	2.44	2.44	9.40 (3.4 - 9.8)
	128+128+128+128	2.00	2.00	2.00	2.00	8.00 (2.9 - 9.2)	2.35	2.35	2.35	2.35	9.40 (3.4 - 9.8)



MCAF 98/128 MR5I

MCAF 188/248 R5I

WALL-MOUNTED

- > Same aesthetic for the 4 sizes
- > Silent mode

- Wall-mounted indoor units for MULTISPLIT DC Inverter system
- Automatic changeover between Cooling/Heating functions to maintain selected temperature
- Special system when heating mode is starting and during defrosting cycle to avoid cool air emission in the room
- Infrared remote control
- Temperature sensor enclosed in the remote control
- "I feel" feature granting the best comfort conditions
- Dry function for dehumidification

- Programmable or automatic three-speed centrifugal fan granting a low noise air diffusion
- Horizontal flaps with automatic swinging or programmable in a fixed position
- Adjustable vertical flaps
- Night setback program
- Washable filter
- Two-way condensate discharge (right, left)

Indoor units	MCAF 98 MR5I		MCAF 128 MR5I		MCAF 188 R5I		MCAF 248 R5I		
	Cooling	Heating	Cooling	Heating	Cooling	Heating	Cooling	Heating	
Nominal capacity (kW)	2.65	3.60	3.50	4.20	5.15	6.00	7.1	8.5	
Air flow (m³/h)	HS 440	480	480	500	850	850	920	920	
Dehumidification (l/h)	1.6	-	2.0	-	2.3	-	2.3	-	
Fan speeds (nb)	3 - auto		3 - auto		3 - auto		3 - auto		
Power supply	V/Ph/Hz 230/1/50		230/1/50		230/1/50		230/1/50		
Running current (A)	0.15	0.15	0.15	0.15	0.15	0.15	0.20	0.20	
Input power (kW)	0.035	0.035	0.035	0.035	0.035	0.035	0.045	0.045	
Deflection	Horizontal	manuel		manuel		manuel		manuel	
	Vertical	auto		auto		auto		auto	
Ø Refrigerant connections	(inches) 1/4 - 3/8		1/4 - 3/8		1/4 - 1/2		1/4 - 5/8		
External Ø of condensate drain pipe	(mm) 18		18		18		18		
Sound power level (dB(A))	55	55	57	55	59	58	64	63	
Sound pressure level (dB(A)) at 2m	Silent/LS/MS/HS 23 / 28 / 31 / 34		25/29/33/36 25/29/31/34		28/34/38/41 28/34/37/40		30/38/41/44 30/37/40/43		
Net weight	kg 10		10		12		12		
Height x width x depth	mm 285 x 825 x 189		285 x 825 x 189		298 x 1 065 x 218		298 x 1 065 x 218		

The pressure levels here indicated are in compliance with the European standard EN 12102



KAF 98 MR5I

CONSOLE

KPAF 128 MR5I

KPAF 187/247 R5I

FLOOR/CEILING



KAF

KPAF

- Console or floor/ceiling indoor unit for MULTISPLIT DC Inverter system
- Automatic changeover between Heating and Cooling functions to maintain selected temperature
- Special system when heating mode is starting and during defrosting cycle to avoid cool air emission in the room
- Infrared remote control
- Temperature sensor enclosed in the remote control
- "I feel" feature granting the best comfort conditions
- Dry function for dehumidification

- Programmable or automatic three-speed centrifugal fan granting a low noise air diffusion (KPAF)
- Adjustable horizontal flaps (KAF)
- Horizontal flaps with automatic swinging or to be set to a fixed position (KPAF)
- Adjustable vertical flaps
- Night setback program
- Washable filters
- Active charcoal filter as accessory (KPAF)

Indoor units		KAF 98 MR5I		KPAF 128 MR5I		KPAF 187 R5I		KPAF 247 R5I	
		Cooling	Heating	Cooling	Heating	Cooling	Heating	Cooling	Heating
Nominal capacity (kW)		2.65	3.6	3.5	4.2	5.15	6.0	7.1	8.5
Air flow (m³/h)	LS/MS/HS	320 / 390 / 425		500 / 590 / 700		515 / 615 / 720		650 / 800 / 900	
Dehumidification	l/h	1.0	-	1.3	-	2.3	-	3.3	-
Fan speeds	nb	3 - auto		3 - auto		3 - auto		3 - auto	
Power supply	V/Ph/Hz	230/1/50		230/1/50		230/1/50		230/1/50	
Running current	A	0.12	0.12	0.29	0.29	0.33	0.33	0.33	0.33
Input power	kW	0.026	0.026	0.065	0.065	0.075	0.075	0.075	0.075
Deflection	horizontal	manuelle		manuelle		manuelle		manuelle	
	vertical	manuelle		auto		auto		auto	
Ø Refrigerant connections FLARE	(inches)	1/4 - 3/8		1/4 - 3/8		1/4 - 1/2		1/4 - 5/8	
External Ø of condensate drain pipe	(mm)	18		18		18		18	
Sound power level (dB(A))	LS/MS/HS	42 / 48 / 51		46 / 51 / 55		47 / 52 / 56		52 / 55 / 58	
Sound pressure (dB(A))	LS/MS/HS	34 / 40 / 43		38 / 43 / 47		39 / 44 / 48		44 / 47 / 50	
Net weight	kg	18.6		23.5		23.5		23.5	
Height x width x depth	mm	700 / 560 / 200		680 / 900 / 190		680 / 900 / 190		680 / 900 / 190	

The pressure levels here indicated are in compliance with the European standard EN 12102

CAF 98/128 MR5I

CAF 187 R5I

CASSETTES

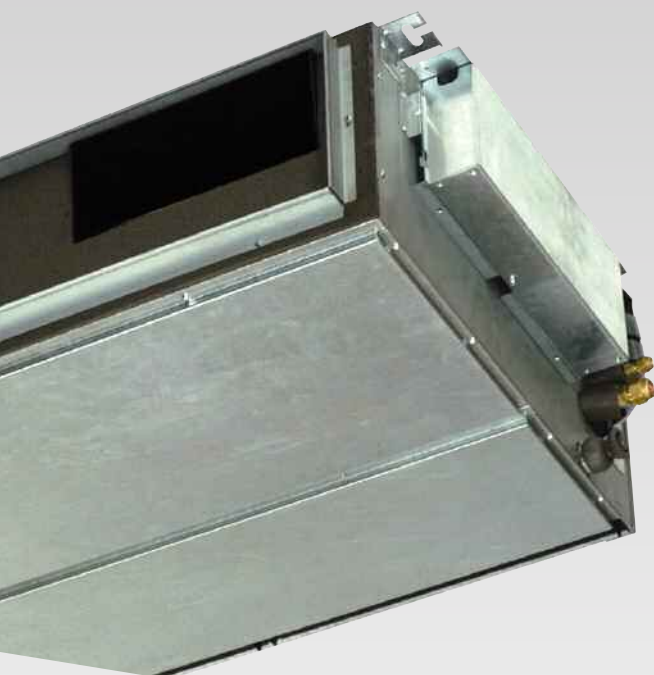


- Cassette indoor unit for false ceiling installation – MULTISPLIT DC Inverter system
- Automatic change-over between cooling and heating modes
- Special function during heat pump start-up and during defrosting cycle to avoid cool air emission in the room
- Infrared remote control
- Temperature sensor inside the remote control
- Night set back capability
- "I feel" feature granting the best comfort conditions
- Dry function for dehumidification

- Programmable or automatic 3-speed centrifugal fan granting a low noise air diffusion
- Flaps swinging or to be set to a fixed position by remote control
- Washable filter
- Equipped with a condensate drain pump
- Possibility to have a connection for fresh air intake

Indoor units		CAF 98 MR5I		CAF 128 MR5I		CAF 187 R5I	
Grille		K 70 N 096 T		K 70 N 096 T		K 70 N 096 T	
		Cooling	Heating	Cooling	Heating	Cooling	Heating
Nominal capacity (kW)		2.65	3.6	3.5	4.2	5.15	6.0
Air flow (m ³ /h)	LS/MS/HS	500 / 600 / 700		500 / 600 / 700		580 / 660 / 790	
Dehumidification	l/h	0.5	-	1.0	-	2.3	-
Fan speeds	nb	3 - auto		3 - auto		3 - auto	
Power supply	V/Ph/Hz	230/1/50		230/1/50		230/1/50	
Running current	A	0.41	0.41	0.41	0.41	0.41	0.41
Input power	kW	0.087	0.087	0.087	0.087	0.087	0.087
Deflection	vertical	auto		auto		auto	
Ø Refrigerant connections FLARE	(inches)	1/4 - 3/8		1/4 - 3/8		1/4 - 1/2	
External Ø of condensate drain pipe (mm)		18		18		18	
Sound power level (dB(A))	LS/MS/HS	46 / 49 / 53		46 / 49 / 53		46 / 49 / 54	
Sound pressure (dB(A))	LS/MS/HS	37 / 40 / 44		37 / 40 / 44		37 / 40 / 45	
Weight I.U. / Grille	(kg)	16.5 + 2.5		16.5 + 2.5		18 + 2.5	
Grille (Height x Width x Depth)	(mm)	296 x 575 x 575		296 x 575 x 575		296 x 575 x 575	
Height x Width x Depth	(mm)	64 x 730 x 730		64 x 730 x 730		64 x 730 x 730	

The pressure levels here indicated are in compliance with the European standard EN 12102



DSAF 98/128 MR5I

DSAF 187/247 R5I

DUCTABLE



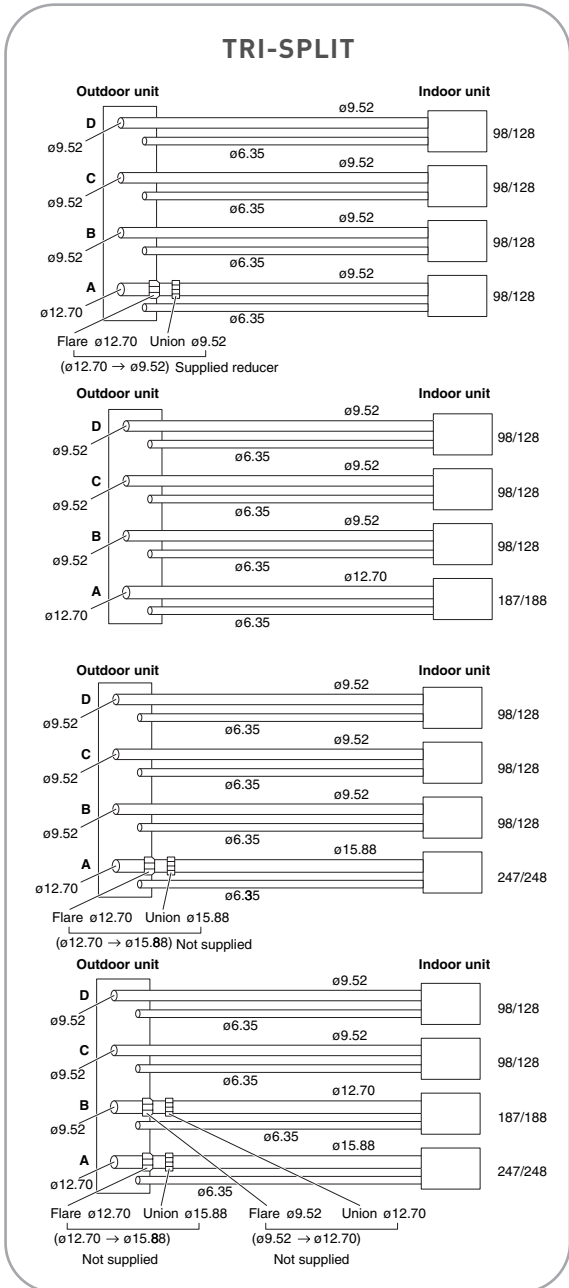
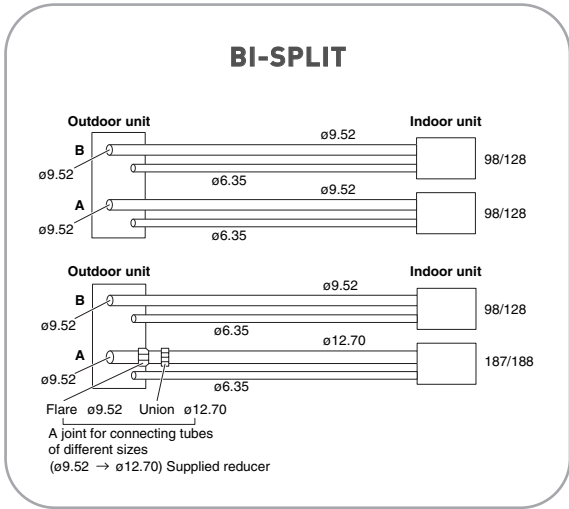
- Ductable indoor units for MULTISPLIT DC Inverter system
- With or without 2 or 3 ducts (plenum as accessory)
- Automatic change-over cooling and heating modes
- Special function during heat pump start-up and during defrosting cycle to avoid cool air emission in the room
- Infrared remote control
- "I feel" feature allowing the best comfort conditions
- Temperature sensor inside the remote control
- Night set back program
- Dry function for dehumidification without cooling mode
- Automatic three-speed centrifugal fan by remote control and available pressure from 50 to 70 Pa
- Easy to modify the available pressure on site
- Washable filter
- Equipped with a condensate drain pump

Indoor unit	DSAF 98 MR5I		DSAF 128 MR5I		DSAF 187 R5I		DSAF 247 R5I	
	Cooling	Heating	Cooling	Heating	Cooling	Heating	Cooling	Heating
Nominal capacity (kW)	2.65	3.6	3.5	4.2	5.15	6.0	7.1	8.5
Air flow (m³/h)	LS/MS/HS 470 / 560 / 620		470 / 560 / 620		455 / 645 / 865		530 / 760 / 985	
Dehumidification	l/h 50 / 70*		50 / 70*		50 / 70*		50 / 70*	
Fan speeds	nb 0.8 -		1.5 -		2.3 -		2.6 -	
Power supply	V/Ph/Hz 3 - auto		3 - auto		3 - auto		3 - auto	
Running current	A 230/1/50		230/1/50		230/1/50		230/1/50	
Input power	kW 0.36 0.36		0.36 0.36		0.6 0.6		0.6 0.6	
Deflection	vertical 0.08 0.08		0.08 0.08		0.138 0.138		0.138 0.138	
Ø Refrigerant connections FLARE	(inches) 1/4 - 3/8		1/4 - 3/8		1/4 - 1/2		1/4 - 5/8	
External Ø of condensate drain pipe	(mm) 18		18		18		18	
Sound power level [dB(A)]	LS/MS/HS 49 / 52 / 54		49 / 52 / 54		42 / 47 / 54		46 / 49 / 57	
Sound pressure [dB(A)]	LS/MS/HS 40 / 43 / 45		40 / 43 / 45		33 / 38 / 45		37 / 40 / 48	
Net weight (UI/Plenum)	kg 30 / 6		30 / 6		35 / 7.5		35 / 7.5	
Height x width x depth	mm 266 x 926 x 571		266 x 926 x 571		266 x 1 132 x 571		266 x 1 132 x 571	
Height x width x depth with plenum	mm 266 x 926 x 771		266 x 926 x 771		266 x 1 132 x 771		266 x 1 132 x 771	

The pressure levels here indicated are in compliance with the European standard EN 12102

*Fan booster

CONNECTING INFORMATION



Note : Trial outdoor unit allows up to 4 indoor units to be connected. However, only three indoor units can operate simultaneously.

